

Welcome to Aston University and Careers and Placements

EXCELLENT
DIFFERENT
DISTINCTIVE
ASTON



Contents

- ▶ About Aston University
- ▶ Welcome from Professor Alec Cameron, Vice Chancellor & Chief Executive
- ▶ University values and staff expectations
- ▶ About Careers and Placements

Founded in 1895 and a University since 1966, Aston is a long established research-led University known for its world-class teaching quality and strong links to business and the professions. Professor Alec Cameron became Vice Chancellor of the University in 2016, building on a strong legacy left by the Baroness Brown of Cambridge.

Outstanding graduate employability

Aston has been a leading university for graduate employment success for over 25 years. More than 80% of Aston graduates go on to a graduate level job within six months. The majority of Aston students choose to take an integrated placement year or year abroad, making them very attractive to employers. We have strong relationships with national and international graduate employers, as well as smaller and local employers. These relationships are extremely important and make a real contribution to graduate employability.

Career focussed programmes

Aston's close and established links with business, the public sector and the professions ensure that our career focussed degree programmes are inspiring, challenging and constantly updated to equip students with essential work-related skills and experiences.

Excellence in teaching and research

We are committed to high quality teaching and academic excellence, ensuring we provide the highest standard of education to our students. Aston has an excellent reputation for research which shapes and improves lives. We're proud of the quality of our research and the real world applications developed as a result – it makes a substantial and beneficial difference to people, organisations and society.

Aston's four academic Schools offer a range of undergraduate and postgraduate degree programmes, and also work with the public and private sectors to develop tailored Foundation Degree programmes.

International

Aston University is a popular choice for international students. We recognise and welcome the important academic contribution and cultural diversity international students bring to our university environment. Students from over 120 countries study at Aston University each year

Aston University is ranked 29th in the world and 9th in the UK as one of the 'most international universities in the world.' (The Times Higher World University Ranking, 2016-17).

Birmingham – one of Europe's liveliest cities

Birmingham is internationally recognised as a leader in leisure, entertainment, shopping and sport. It is an international centre for business, commerce and industry, housing numerous UK and overseas banks and law firms. Birmingham attracts 25 million visitors each year and contributes billions to the national economy through manufacturing and engineering.

The University campus is located in the city centre making it very accessible to an extensive network of motorways and railways.

A green, sustainable campus

Located in the heart of a vibrant city, our 40 acre campus houses all the University's academic, social and accommodation facilities for our 14,355 students. All staff have the opportunity to contribute to our sustainability agenda and practices.



Welcome from Professor Alec Cameron, Vice Chancellor & Chief Executive

Dear applicant

The HE sector is currently experiencing an unprecedented scale and pace of change, combined with a high degree of ambiguity and uncertainty. Those universities able to adapt swiftly to a changing and increasingly competitive market will thrive. As a mid-sized, focused university Aston has the advantages of agility, innovation and team working that some other institutions do not. Our integrated placement year, our applicable, exploitable research, and our commitment to widening participation all help to make Aston distinct.

The 2014 Research Excellence Framework results recognised the quality and impact of Aston research. This research directly influences medical breakthroughs, advancements in engineering, innovation, policy and practice in government, and the strategies and performance of local and international business. The Times Higher Education REF rankings placed Aston University 35th in the UK and 78% of our submissions were judged to be World Leading or Internationally Excellent.

Teaching quality and the student experience are an important focus at Aston. We are committed to doing all we can to address the needs of students and to assisting them to achieve their career ambitions on graduation.

We very much look forward to receiving your application and learning more about how you would contribute to Aston's continuing success.

A handwritten signature in blue ink that reads "Alec Cameron." The signature is fluid and cursive, with a period at the end.

Professor Alec Cameron
Vice Chancellor & Chief Executive

► University values

All staff are expected to demonstrate / promote the University's values and expectations, which are an integral part of our 2020 strategy and underpin the culture of the University. Our vision is to be the UK's leading University for business and professions, where original research, enterprise and inspiring teaching deliver global impact. More information about the university's values is available at www.aston.ac.uk/staff/working/dare-to-succeed/values/

In addition, our leaders are expected to be accountable, help to execute strategic visions of the University, share and set clear expectations that inspire those around them. Further information on our leadership expectations can be found at: <http://www.aston.ac.uk/EasySiteWeb/GatewayLink.aspx?allid=158042>



► Staff expectations

All staff are expected to;

- Be committed to delivering high performance
- Recognise and praise the high performance of others
- Remain open to new ideas and seek to act quickly for positive change
- Develop themselves, and support the development of others
- Be ambitious, for themselves, their teams and the university
- Engage with others, listen, observe and communicate
- Focus on excellent customer service, finding solutions and saying “yes”
- Make reasoned decisions without fear of blame
- Engender trust through their own actions
- Be fair in all matters

► Careers + Placements

The services of the Careers+Placements are available to students from the moment they begin their studies at Aston, right up to three years after they graduate. We help with careers queries, decision making and provide placements support.

The Placements Team

At Aston University, placements are key elements of our 2020 strategy. We believe the placement year drives our excellence in employability with Aston University currently ranked in the top ten for graduate level employability. But competition in the sector is fierce so to protect our heritage USP we cannot rest on our laurels. At present around 73 per cent of Aston undergraduates opt for a placement as part of a four year programme, our key strategic objective is to achieve 100% take-up of placements by 2020, with over one third of those students undertaking their placement overseas.

Aston currently has over 1000 students on placement in the UK and abroad. Depending on the programme, the placement year is an integral or optional part of the Aston's degree, with the third year of the degree involving a placement.

In order to achieve our strategic objectives, and enable us to offer an exceptional experience our students and employers are supported by three interlinked teams, which together make up the Placements Team.

The Student Support Team provides a programme of support for students to maximise their success in their placement search and whilst on placement. Each school of study has a dedicated Placement Coordinator who provides students with the most relevant placement information for their degree programme. The team also support students during their placement year, ensuring they really capitalise on the placement experience.

The International Placements Team provides support to students undertaking work and study placements overseas, students on the Erasmus scheme, International students and overseas employers and institutions. Again, their support continues throughout the placement year, using their specialist knowledge and skills to provide tailored support, step by step throughout the placement.

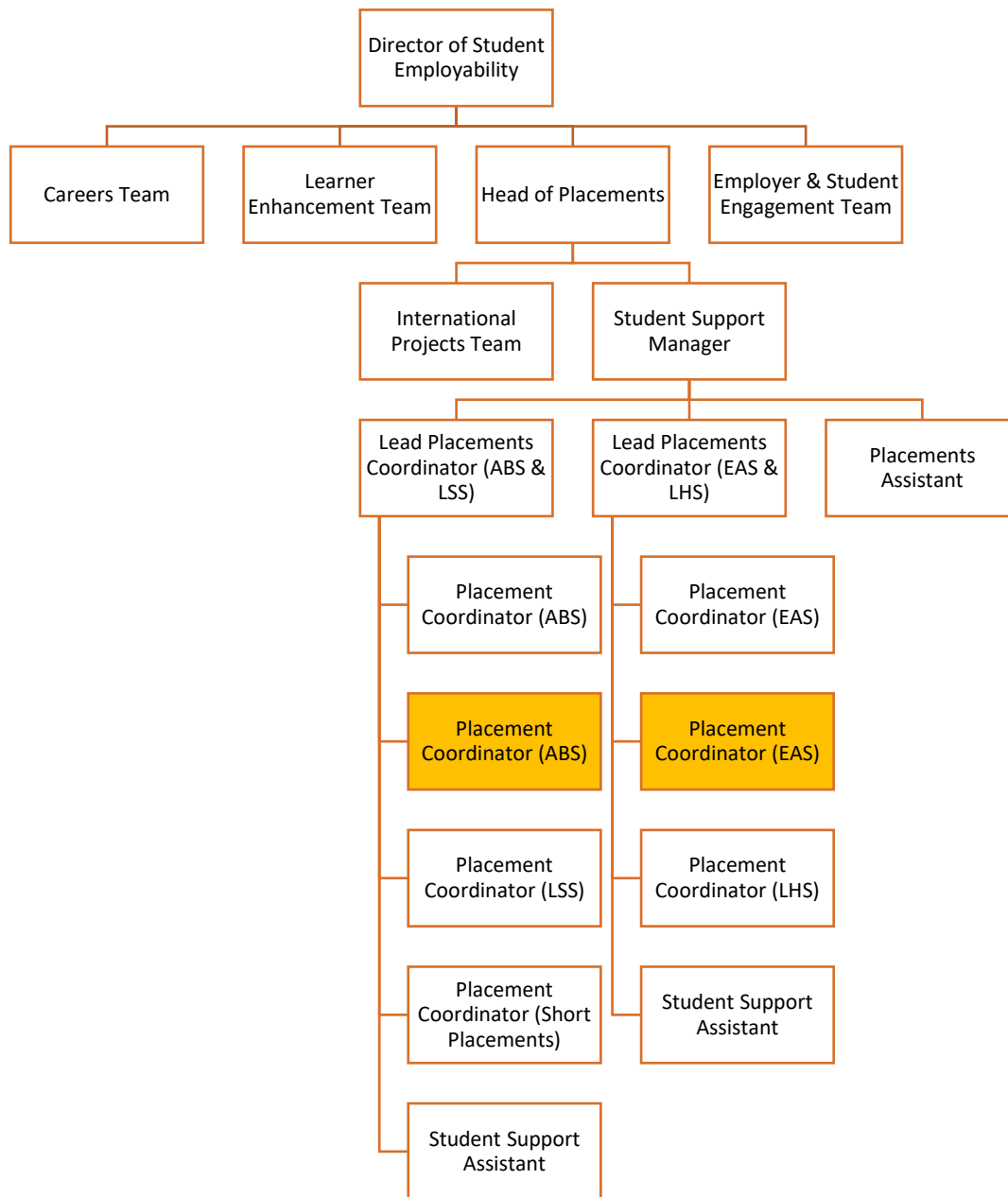
The Employer Engagement & Marketing Team offers a single point of contact for employers from all sectors and industries to engage with Aston University for recruitment activities. As well as taking the lead on our innovative student communications; ensuring our students are informed and engaged.

The placement year provides our students with the opportunity to take on graduate level responsibility and 'try out' a career path. It also enables them to apply their theoretical knowledge to a real work place whilst gaining professional experience and developing their employability skills.

We believe that our placement year and year abroad programmes are a big factor in our students securing graduate level jobs, year on year our graduate employability figures are consistently high:

"Aston turns out some of the most sought-after graduates in Britain, with 89.2% landing graduate-level jobs. Aston is 1st in the Midlands (East & West) for graduate employability, ahead of local Russell Group competitors Birmingham, Warwick and Nottingham". (Sunday Times University Guide 2013).

Organisational Structure



Aston University
Employable Graduates
Exploitable Research

Aston University
Birmingham B4 7ET

www.aston.ac.uk